

3 Bedrooms / 2.5 Baths  
Total Heated Living Area  
2196 Sf

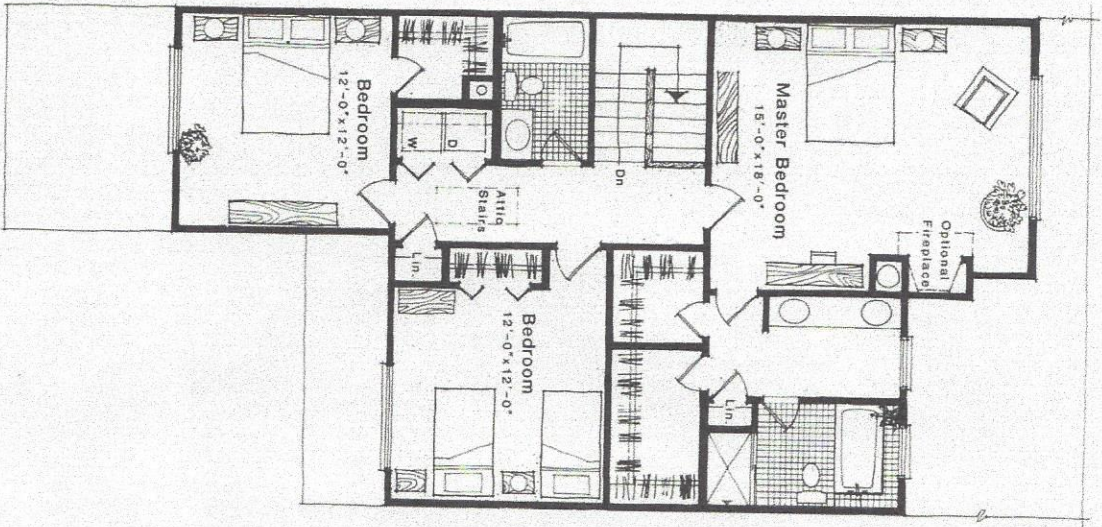
TOTAL Sketch by a la mode, Inc.

**Area Calculations Summary**

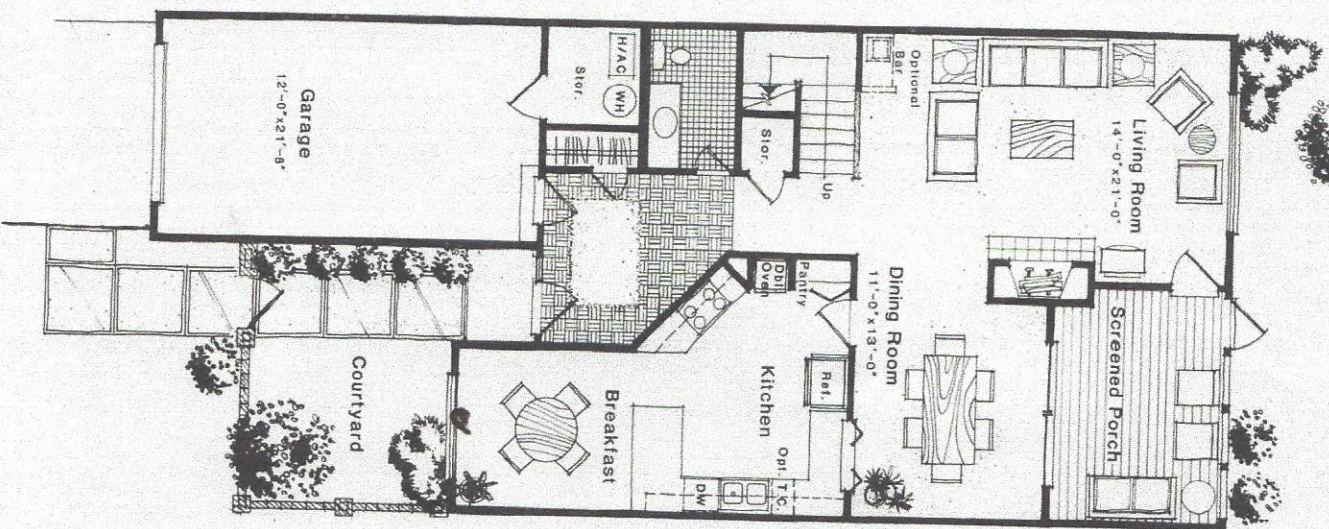
Living Area	Area	Calculation Details
First Floor	1118.5 Sq ft	$27.4 \times 34.5 = 945.3$ $10.5 \times 9.7 = 101.8$ $6.1 \times 11.7 = 71.4$
Second Floor	1077.4 Sq ft	$12.4 \times 12.4 = 153.8$ $27.4 \times 29.9 = 819.3$ $7.1 \times 14.7 = 104.4$
<b>Total Living Area (Rounded):</b>	<b>2196 Sq ft</b>	
<b>Non-living Area</b>		



# C 3 BEDROOM TOWNHOUSE



2ND LEVEL



1ST LEVEL